

5 55 334 5

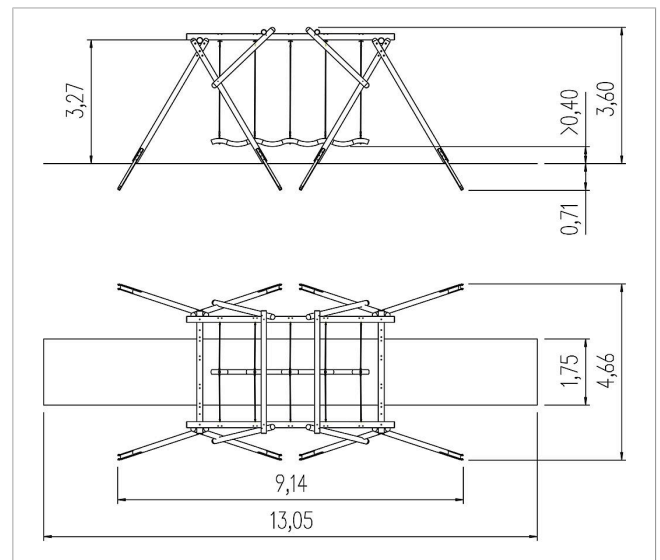
## eibe ibondo Hilera de columpios










made in germany

3+

### Volumen del suministro

1 armazón de columpio: madera de conífera con impregnación en autoclave  
1 fila de columpios: cable de acero recubierto con plástico  
Bases para postes: acero galvanizado en caliente



	Material	Madera de conífera con impregnación en autoclave
	Nivel fundamento	FL 3
	Espacio mínimo	1305x466x360 cm
	Altura de caída libre	205 cm
	Prot. contra caídas neto	23 m <sup>2</sup>
	Fundamentos	6x FHS
	Montaje	2 personas/8 h
	Pieza más grande	550xØ 16 cm
	Pieza más pesada	50 kg