

5 55 133 5

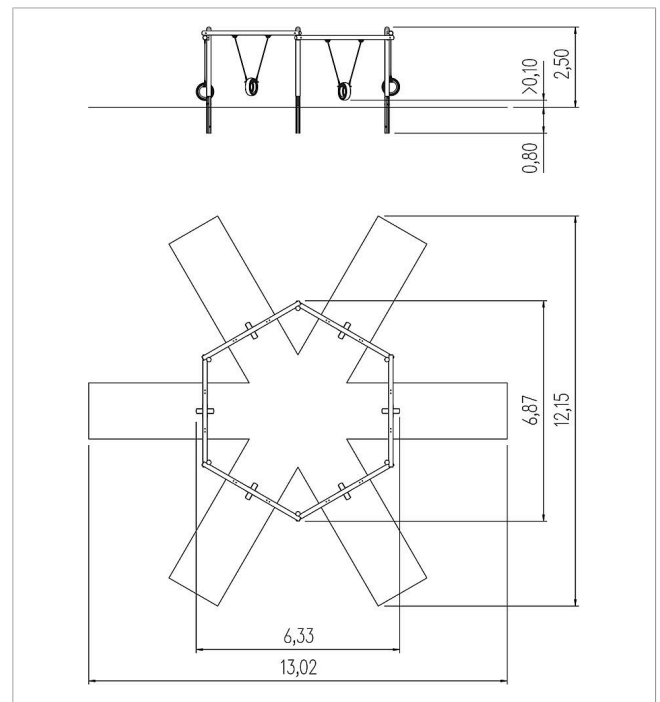
eibe ibondo Columpio de seis plazas










made in germany

4+

Volumen del suministro

1 armazón de columpio: madera de conífera con impregnación en autoclave
6 asientos de neumático con cadena: acero galvanizado en caliente, goma
Bases para postes: acero galvanizado en caliente



	Material	Madera de conífera con impregnación en autoclave
	Nivel fundamento	FL 3
	Espacio mínimo	1302x1215x328 cm
	Altura de caída libre	148 cm
	Prot. contra caídas neto	60,5 m ²
	Fundamentos	6x FHS
	Montaje	3 personas/4 h
	Pieza más grande	348xØ 140 cm
	Pieza más pesada	30 kg