

5 45 519 0

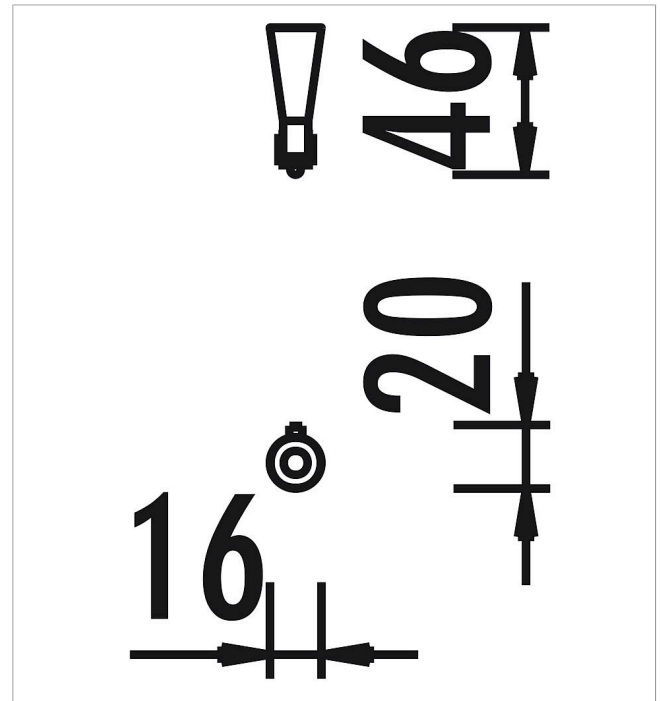
eibe playo Silo de arena










made in germany

3+

Volumen del suministro

1 silo de arena: acero inoxidable



| | | |
|---|--------------------------|------------------|
|  | Material | Acero inoxidable |
|  | Nivel fundamento | - |
|  | Espacio mínimo | 16x20x180 cm |
|  | Altura de caída libre | - |
|  | Prot. contra caídas neto | - |
|  | Fundamentos | - |
|  | Montaje | 1 persona/0,25 h |
|  | Pieza más grande | 20x19x46 cm |
|  | Pieza más pesada | 2 kg |